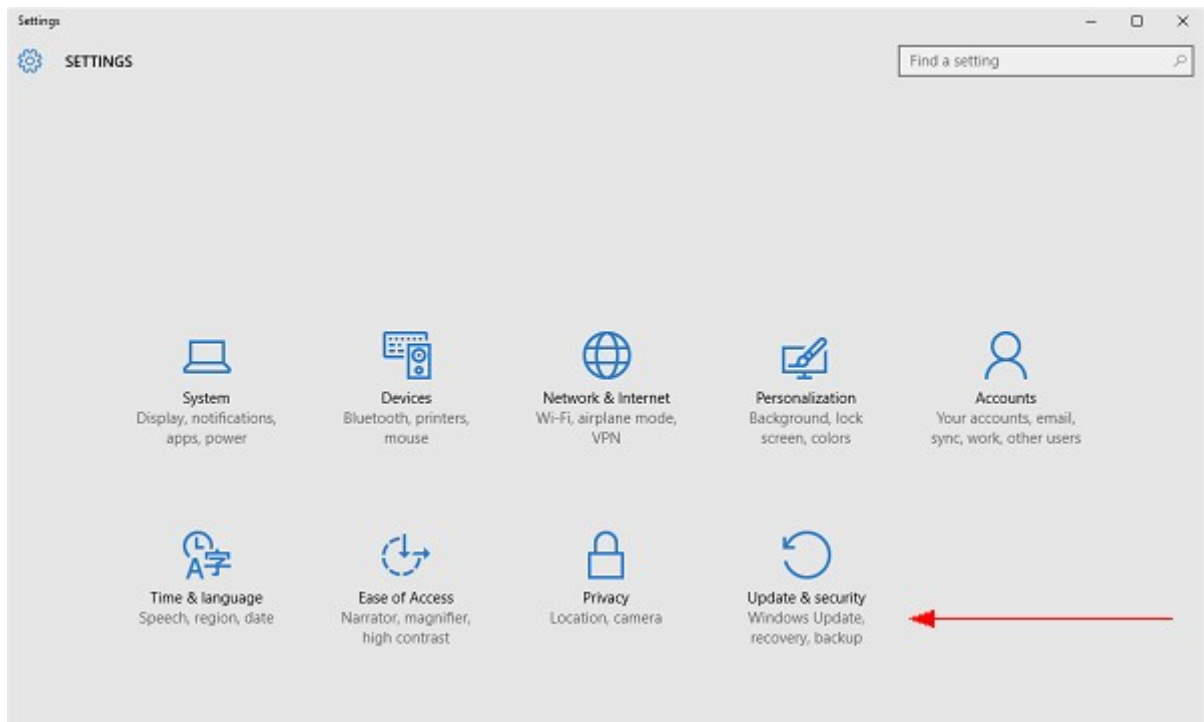
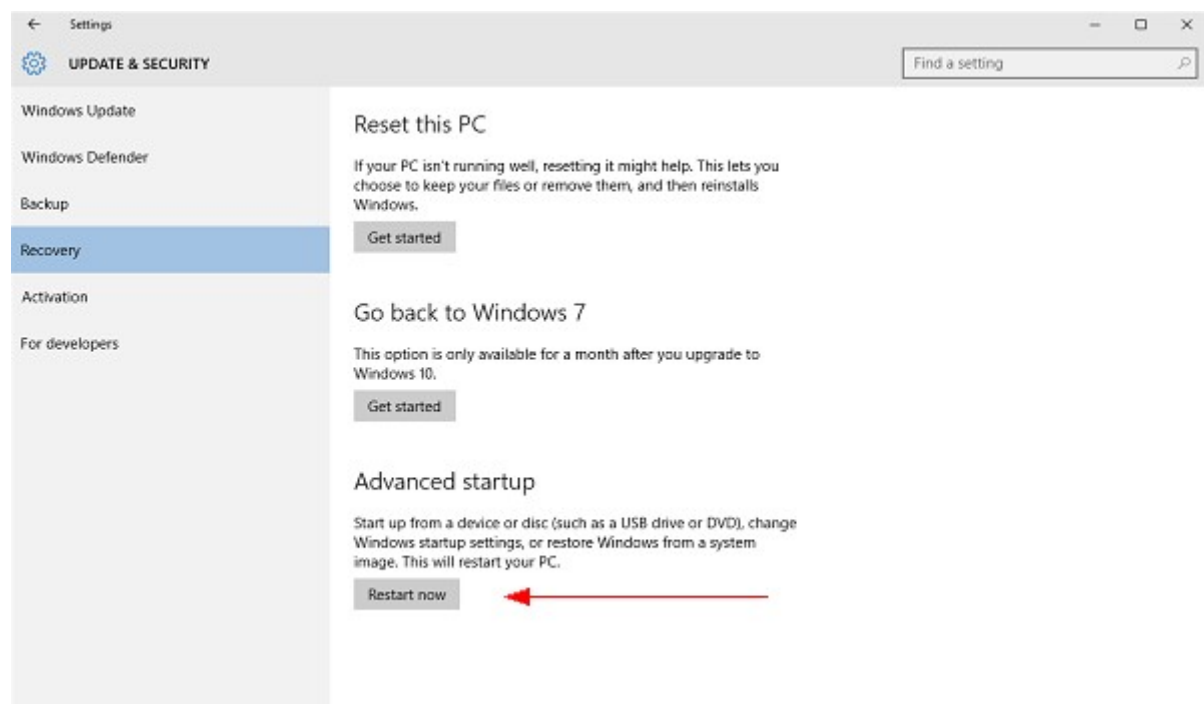


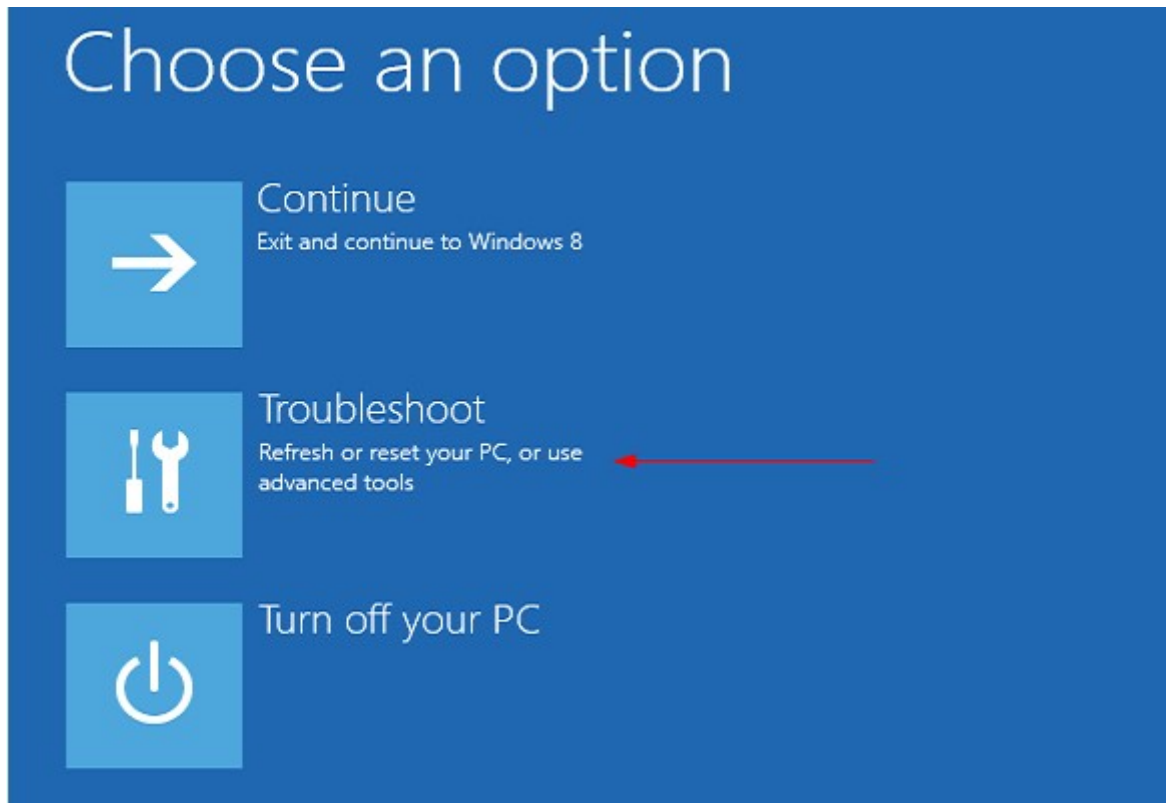
Step 1



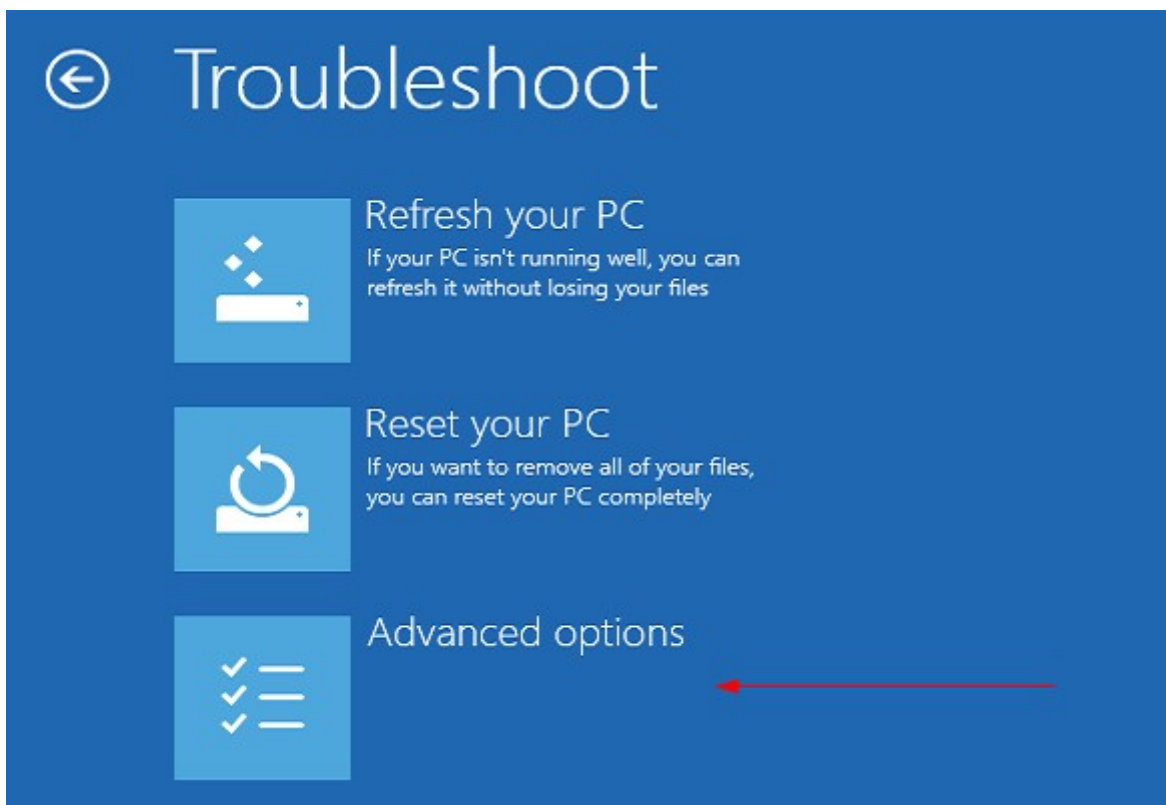
Step 2



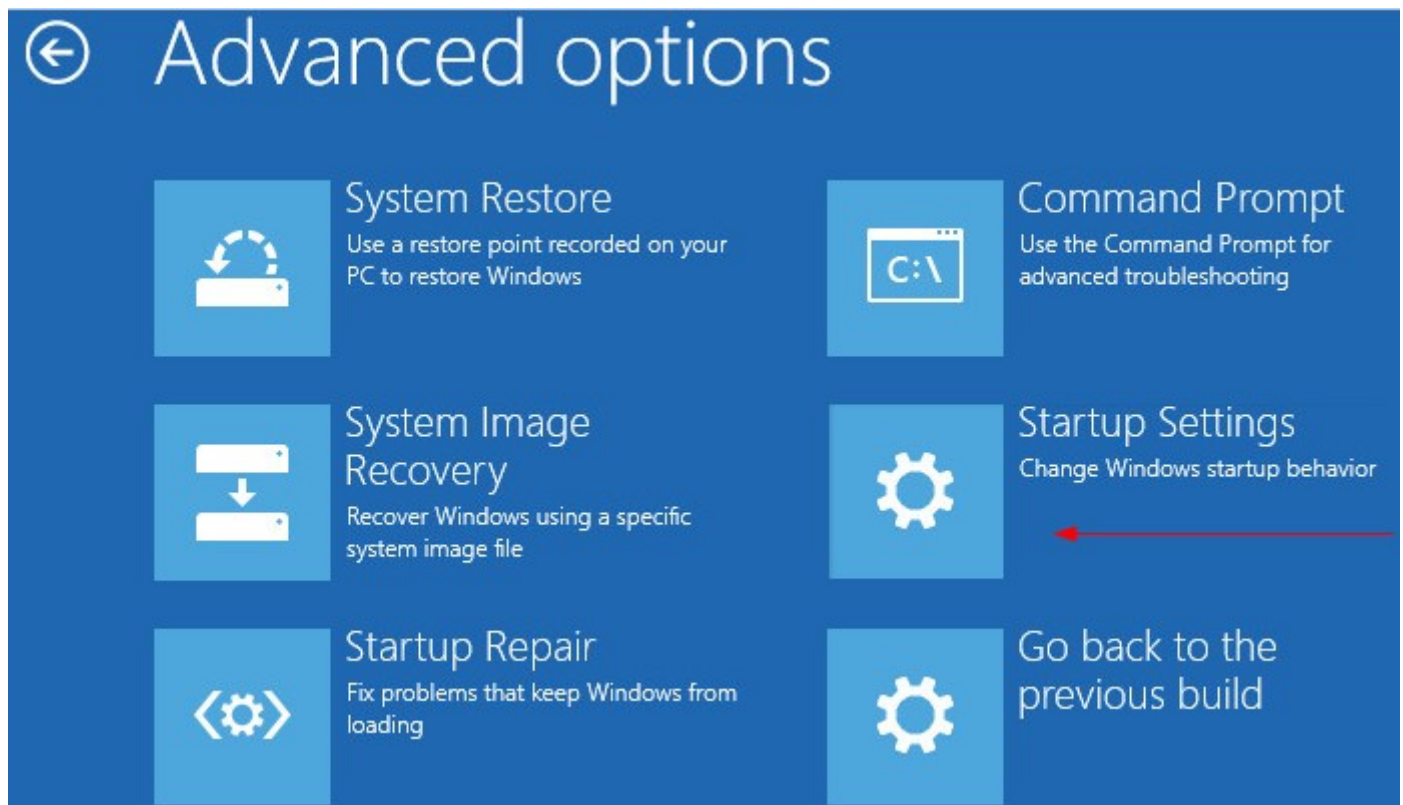
Step 3



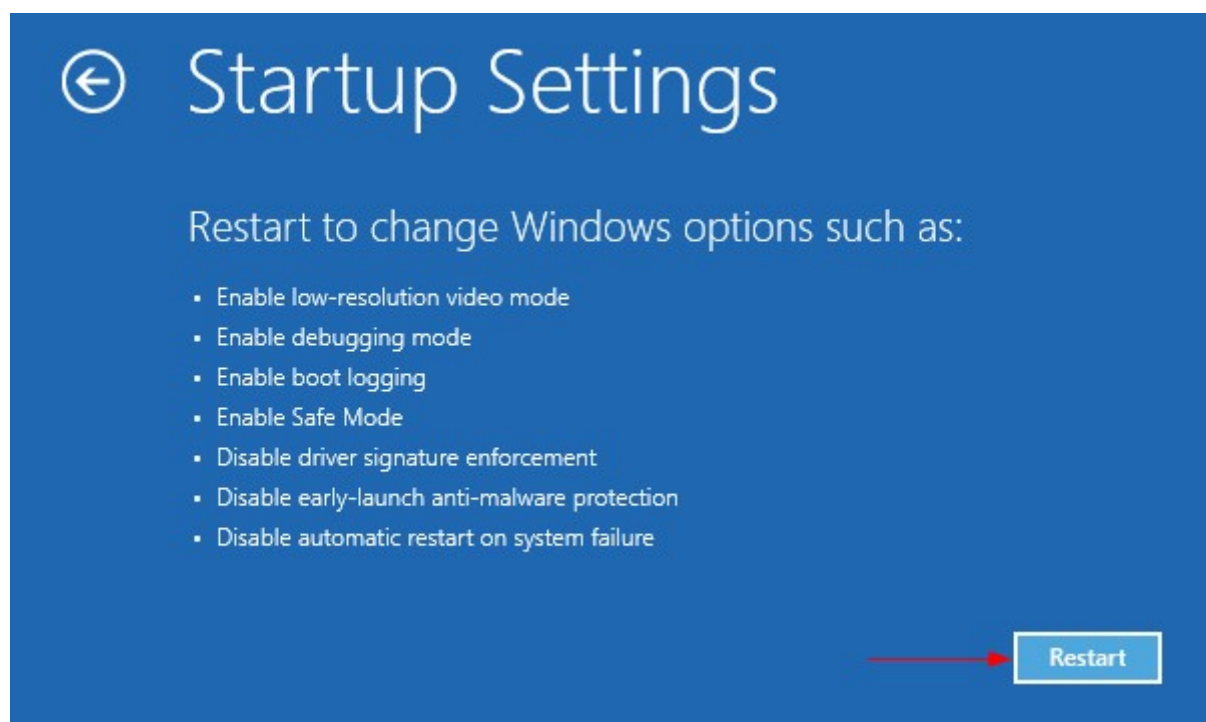
Step 4



Step 5



Step 6



Step 7

Startup Settings

Press a number to choose from the options below:

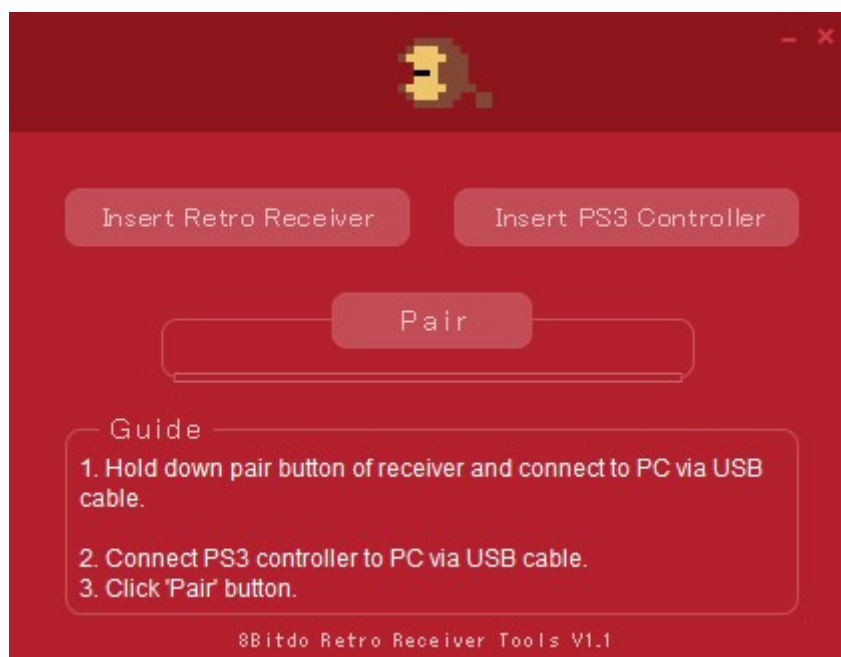
Use number keys or functions keys F1-F9.

- 1) Enable debugging
- 2) Enable boot logging
- 3) Enable low-resolution video
- 4) Enable Safe Mode
- 5) Enable Safe Mode with Networking
- 6) Enable Safe Mode with Command Prompt
- 7) Disable driver signature enforcement
- 8) Disable early launch anti-malware protection
- 9) Disable automatic restart after failure

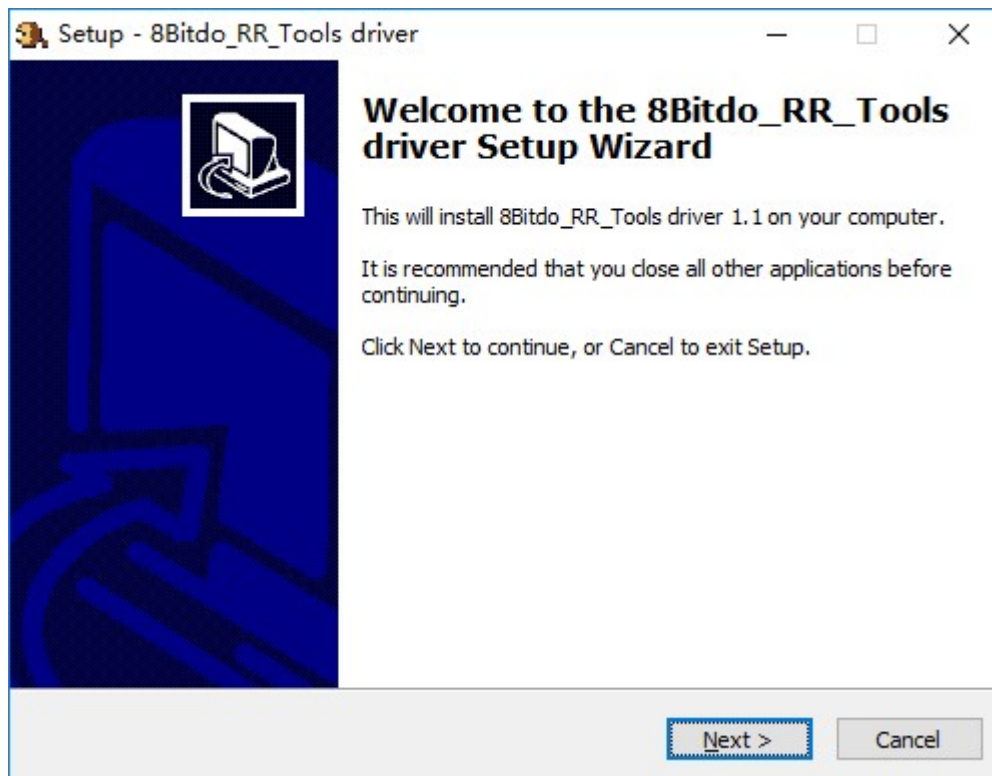
Press F10 for more options

Press Enter to return to your operating system

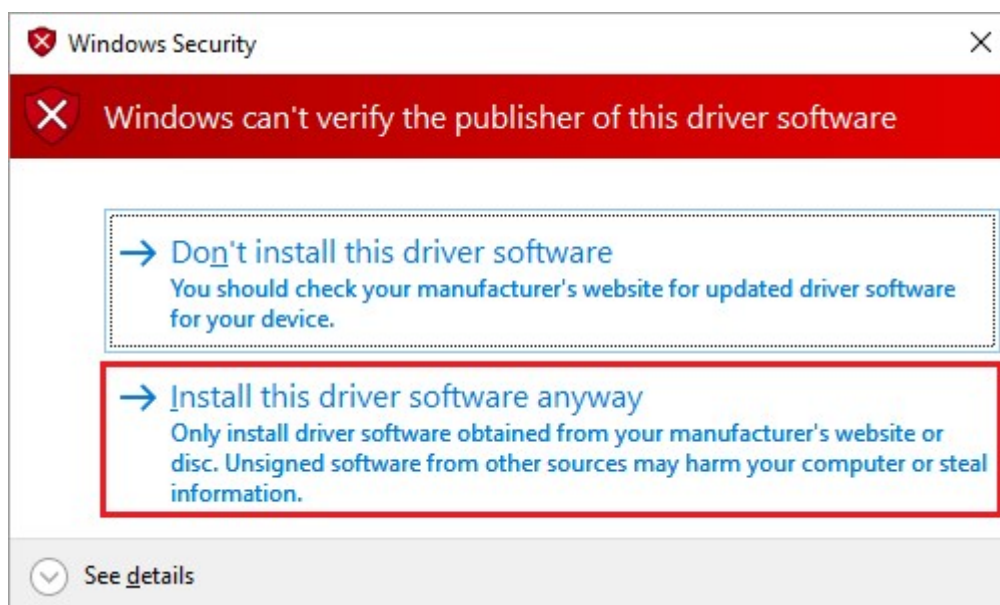
Step 8 Open Tools



Step 9 Setup RR Tools driver (If the driver has not installed, it'll pop up the window)



Step 10 Choose "Install this driver software anyway"



Step 11 After the driver has installed, the PS3 controller will be detected once you plug in.



NOTE: “Driver Signature Enforcement” will resume after resetting the computer.

More information please visit the official website: www.8bitdo.com

Or:

http://download.8bitdo.com/Manual/Receiver/usb_adapter/8Bitdo_USB_RR_Manual.pdf